

CAREER PROFILES:

NAME: BROOKE LOEWENTHAL

**SENIOR ANIMAL CARE MANAGER,
SEAL RESCUE IRELAND**

AN OVERVIEW OF YOUR JOB:



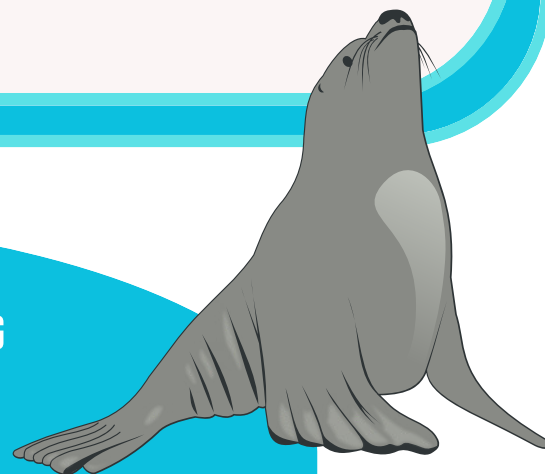
Animal Care:

Taking care of seals includes feeding, medications, wound care, and cleaning.

Outreach:

Additionally, we are always monitoring our rescue hotline, our volunteer network, and fixing anything that needs done around the center.

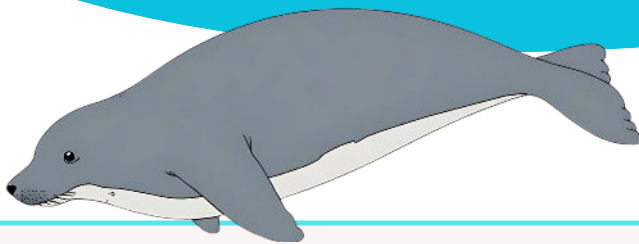
WHAT'S A TYPICAL WORKING DAY LIKE FOR YOU?



The day begins at 8:45am with rounds to check on all the seals. After the initial feeding, cleaning duties begin. During this time, I ensure that each seal's feed and medications are correct while also planning the day's tasks. This may include identifying which pools need to be cleaned and which seals need to be weighed. The day continues with additional feedings, as well as any required wound care or medication administration. The shift typically ends around 5:30pm, followed by a return for an evening feeding at 7:30pm.

WHERE ARE YOU USUALLY BASED? E.G. AN OFFICE, A LAB, A RESEARCH VESSEL, A HOME OFFICE

I am primarily based on-site at the seal rescue centre, where I spend most of my week working directly with the seals—caring for them, supporting their rehabilitation, and assisting with daily husbandry tasks. Around one to two days per week, I work in the office focusing on other aspects of the organisation, including coordinating our rescue network, processing orders, and managing data collection.”

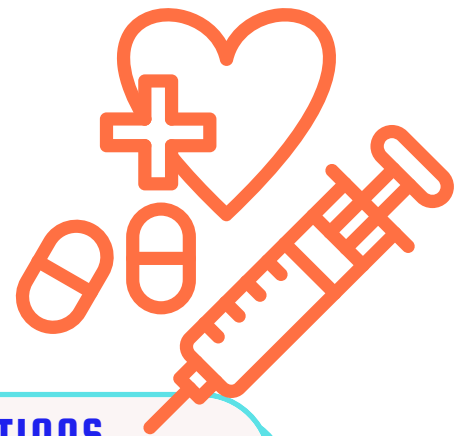


HOW LONG HAVE YOU BEEN IN THIS LINE OF WORK?

1 YEAR

BESIDES FORMAL QUALIFICATIONS, WHAT SKILLS OR TRAITS ARE MOST USEFUL FOR YOUR TYPE OF WORK?

Time management is always important, as well as problem solving and always being aware of surroundings. This would be in the case of the seals and what they are doing and how they are progressing.



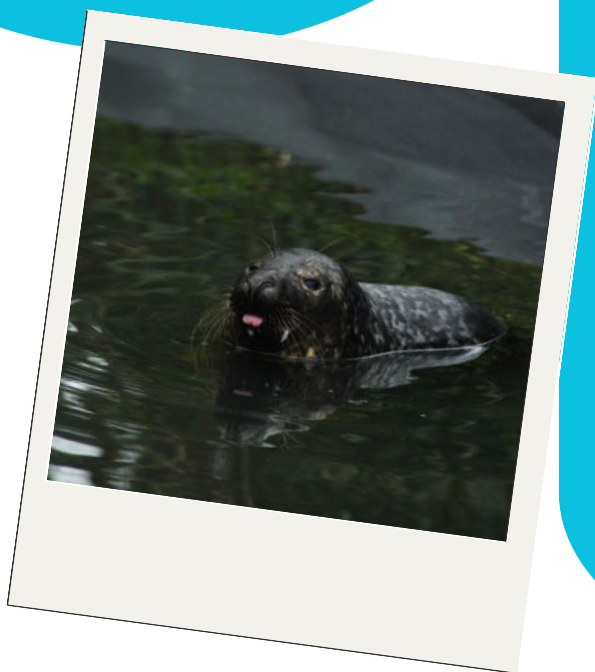
WHAT WORK EXPERIENCE, QUALIFICATIONS OR TRAINING WOULD YOU RECOMMEND FOR GETTING INTO THIS CAREER?

I always recommend getting a degree but by far the best thing you can do is get as much hands-on experience you can.

Through volunteering and internships you can learn so much. This will also help you understand if this is something you would like to do as a career.

**WHAT ADVICE
WOULD YOU GIVE TO
A YOUNG PERSON
INTERESTED IN THIS
CAREER PATH?**

Follow your dreams. If it is something that you really love, the long days and hard cases will always be worth it. Put yourself out there and get as much experience as you can



**HOW DID YOU GET
INTO THIS CAREER**

I had seen people rescuing sick animals on the news and since then I knew I wanted to make it a career. I have always loved the ocean and pinnipeds (the family seals are a part of) so I went to university to work towards my goal of becoming a rehab biologist.

**WHAT'S THE MOST
CHALLENGING
PART OF YOUR JOB?**

The role involves unusual hours, and no two days are ever the same. Occasionally, we carry out seal intakes late at night, sometimes even at midnight, but we know how important it is to bring them into our care as quickly as possible so they can receive proper treatment.

WHAT'S YOUR FAVOURITE PART OF YOUR JOB?

I really enjoy getting to see the seals graduate through the different stages in care. From coming into care, then on to fish school, I love getting to see them have the connection of remembering how to eat fish. Once eating fish and gaining weight they get to make it to our pools where we get to see them swim and compete for fish with other seals and once at a good weight they get to be released.

