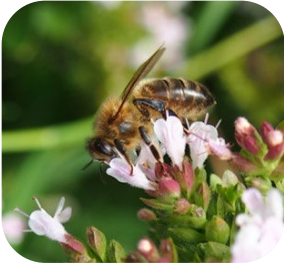


# HoneyBee

## Habitat Hero

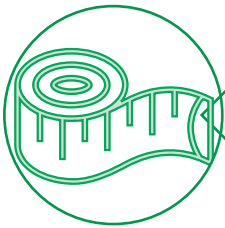


**Common Name:** HoneyBee  
**Irish Name:** An Beach mheala  
**Scientific Name:** *Apis mellifera*

### Seen in Ireland:

Year Round

Most active May-August



**Size:** Adult Honeybee - 6.5cm. And the Queen is larger than the rest.



**Habitat (where it lives):** Honeybees live in a home called 'a hive'. Bees can be found feeding in most habitats in Ireland; you are likely to see bees anywhere there is flowers that produce nectar.

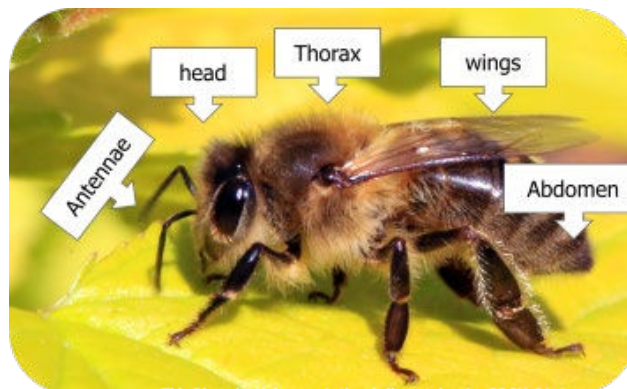
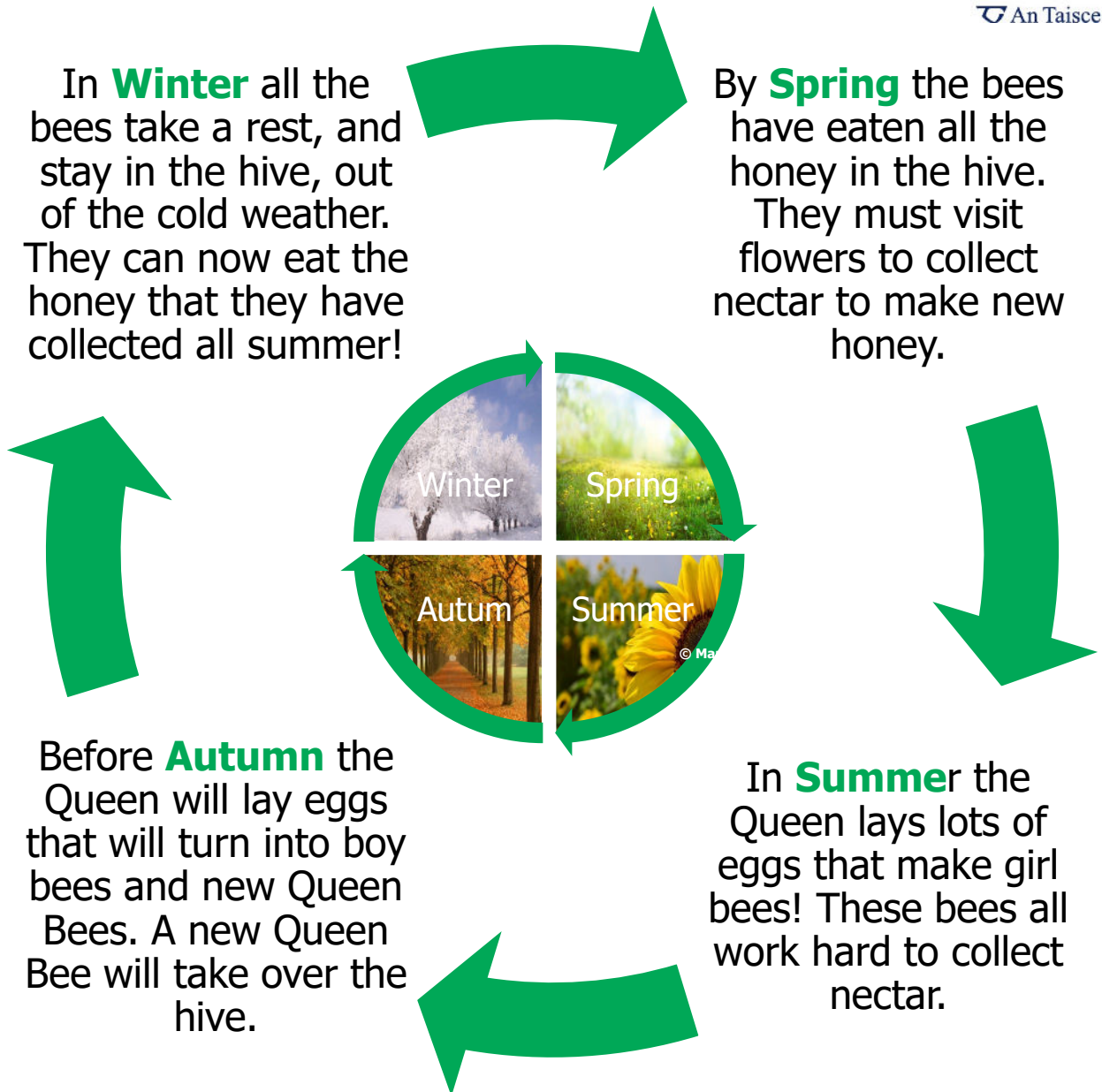


**Diet:** Bees feed on nectar from clover, hawthorn, ivy, dandelions, bramble and many other common native plants.



**Life:** Queen honeybees live 1–2 years but workers live on average 15–38 days in the summer and 150–200 days in the winter.

# Honey Bee Life Cycle



# Honeybee

## Some more Facts:

- There are three types of bee within a hive; 'queen' (female), 'worker' (female) and 'drone' (male).
- They are all similar in appearance; they have a body covered in short hairs, and divided into three main parts; head, thorax and abdomen.
- They have two large eyes and a pair of antennae on the head.
- There are 2 sets of wings above, and three pairs of legs below the abdomen, and there is a narrow waist between the abdomen and the thorax.
- The queen has a longer and more slender abdomen than the others.
- Workers gather pollen on their specially designed back legs.
- Honey is manufactured in the hive from nectar, which is brought back by other bees.
- Honeybees rely on honey during the cold winter months when there are no flowers to feed on.
- A new queen that hatches leaves the hive on her "marriage flight".
- When she is gone, the old queen with a large group of her workers leaves the nest as a swarm and looks for somewhere else to live.
- The new queen returns, having mated with a male from a different colony, to the hive.
- She is the new Queen Bee! The colony will live in the hive from Autumn through Winter, surviving off the summer's honey.
- The honeybee is one of the best-known insects in Ireland.
- It has a very important role in pollinating flowering plants such as Dandelion and Bramble.
- **WARNING:** Never touch a honeybee, or go near a beehive, without permission! If a female bee gets a fright, she will protect herself by using her (very painful) sting! Ouch!

