

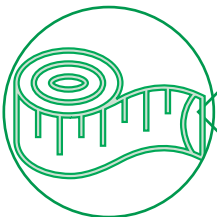
Wood Mouse

Habitat Hero



Common Name: Wood Mouse
Irish Name: Luch féir
Scientific Name: *Apodemus sylvaticus*

Seen in Ireland:
 Year Round



Adults generally weigh between 17–27g and can be up to 10 cm in length excluding the tail; the tail is roughly the same length again. At birth, baby Wood Mice weigh just 1–2g; that's half the weight of a 1 cent coin!



Live in burrows underground. It is found in most habitats. As its name suggests, it is a woodland species, but it is also common in hedgerows, farmland, grasslands and in lower numbers on peat-lands. It prefers habitats rich in ground cover. Unlike the House Mouse, it is not common in urban areas.

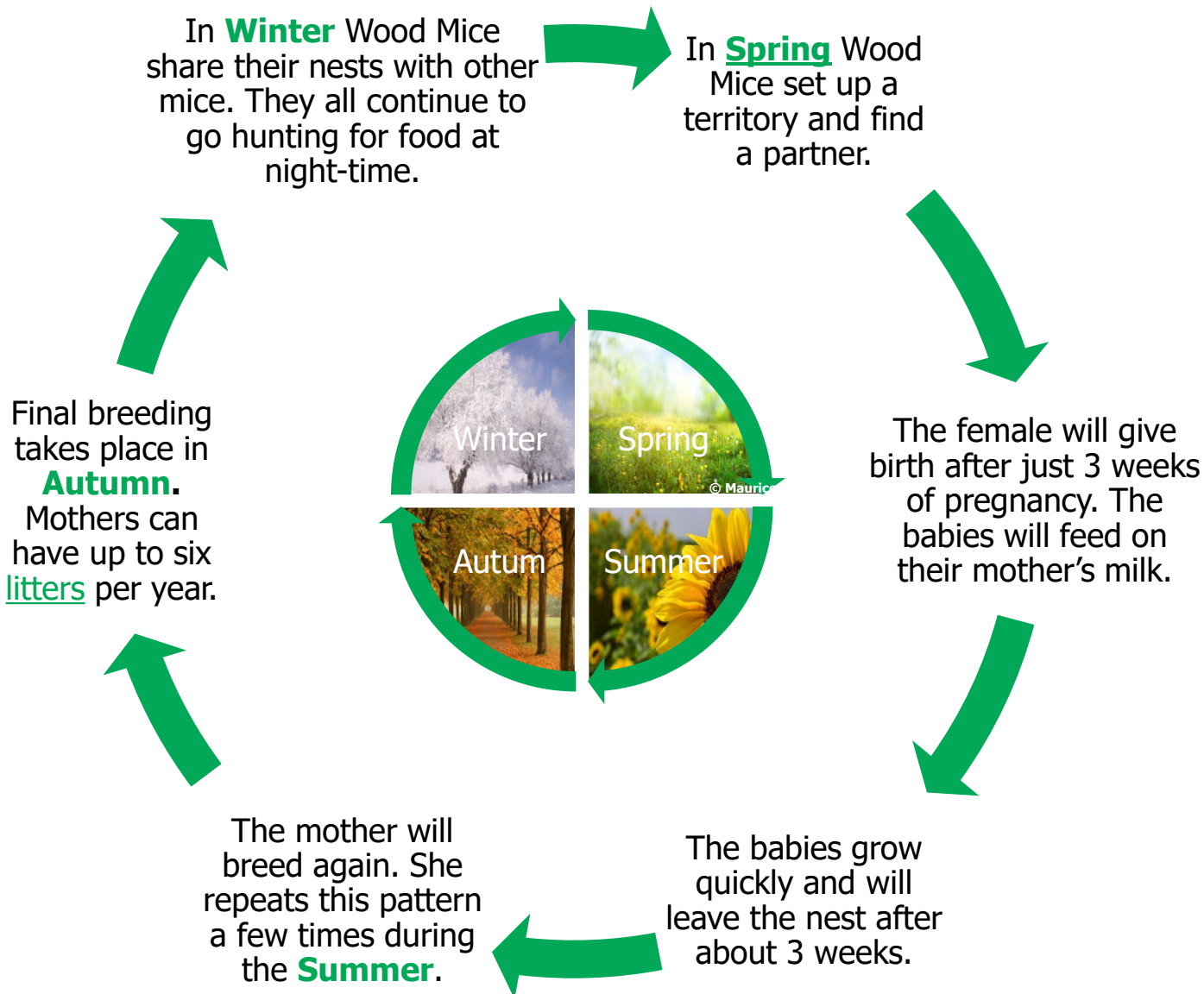


The Wood Mouse is an opportunist and an omnivore; it eats animals and plant foods. Depending on habitat and the time of year, the diet typically includes seeds, nuts and berries as well as small invertebrates such as insect larvae, earthworms, snails and centipedes.



The species is nocturnal (more active at night) and spends most of the day in a burrow. Wood mice are short-lived animals, most only live one year.

Wood Mouse Life Cycle



Wood Mouse



Some more Facts:

- This mouse has brown, slightly golden fur covering its back, and it has a white underbelly (whereas the only other mouse in Ireland, the House Mouse, is a more greyish-brown all over, in comparison).
- The Wood Mouse can also be told apart from other small rodents by its large eyes and ears, long hind-feet and a long, slender tail.
- When there is more than one wood mouse, you call them Wood Mice.
- Wood Mice spend a lot of time in their underground burrows.
- Burrows are dug in soft ground and can contain tunnels and chambers.
- Some chambers act as food stores with a nest room located deeper in the earth where it is warmer.
- Litters is the word given to each group of babies, and the mother Wood Mouse can have up to six in a year.

