

Painted Lady Butterfly

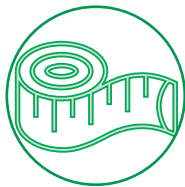
Habitat Hero



Common Name: Painted Lady
Irish Name: Áilleán
Scientific Name: *Vanessa cardui*

Seen in Ireland:

Found throughout Ireland
Flight period:
June to September.



This beautiful butterfly is mainly a dull orange with black markings on its inside wings. It has a colourful red, black and white underside. The wingspan is 65-70mm.



Painted Lady Butterflies are found in Gardens and Woodlands in Ireland, mainly in eastern and southern coastal areas.

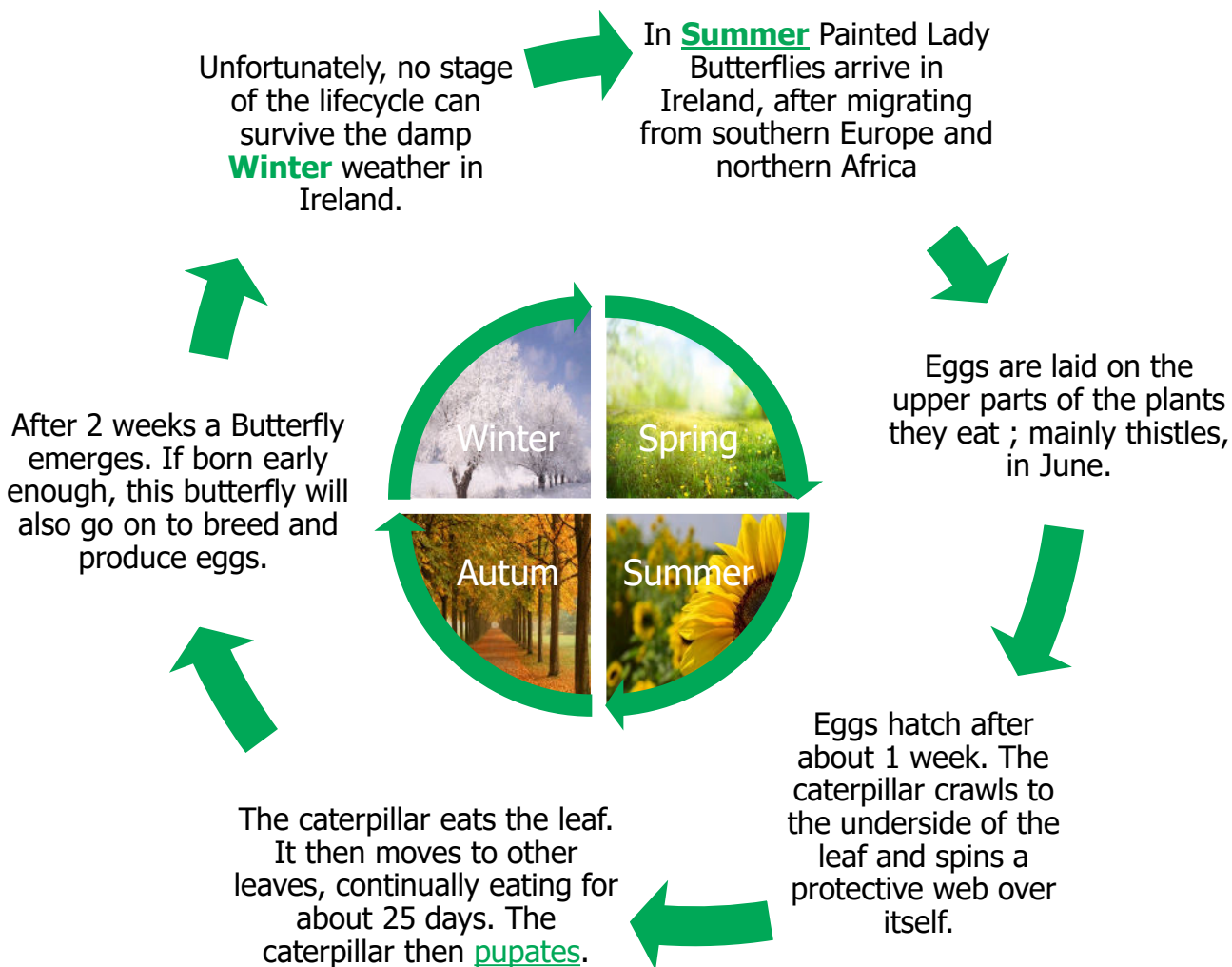


Caterpillars mainly feed on thistles.



Adults only live for about two to four weeks after emerging from the pupa stage.

Painted Lady Butterfly Life Cycle



Painted Lady Butterfly

Some more Facts:

- **Metamorphosis** is the name given to how a caterpillar becomes a butterfly or moth.
- There are four stages in the metamorphosis of butterflies: **egg**, **larva**, **pupa**, and **adult**. Adult butterflies lay the eggs
- The young that come out of the eggs are called '**Larva**', in this case they are caterpillars.
- After a large feed the caterpillars are ready to **pupate**, it stops eating and finds a twig, leaf or branch to hang upside down from.
- After this, they spin a cocoon to sleep in! where the pupa transforms into a butterfly.
- The lifecycle from larva to butterfly takes from 10 to 14 days.
- The Painted Lady is a long-distance migrant (traveler).
- It causes the most spectacular butterfly **migrations** to be witnessed in Britain and Ireland.
- Each year, butterflies travel northwards from the edges of the deserts of North Africa, the Middle East, and central Asia to mainland Europe, reaching Britain and Ireland.
- The abundance varies year on year; weather is largely to blame.

