

OCEAN WONDERS

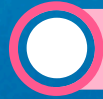
Quiz



Do you remember the 5 Ocean Wonders? Circle the odd one out!



Elephant Seal



Krill



Arctic Tern



Greenland Shark



Cod



Polar Bear

A close-up photograph of an elephant seal resting on a sandy beach. The seal's head is in the foreground, showing its large, wrinkled snout and a dark eye. The background is a soft-focus view of the sand and the seal's body extending into the distance.

True or False - There are two different populations of Elephant Seals?



True



False

Arctic Terns go on an epic migration every year, covering 96,000 km which is the equivalent to flying around the world how many times?

5 times

10 times

2.5 times

1 time





*The Arctic Tern is similar in
size to:*

a Puffin

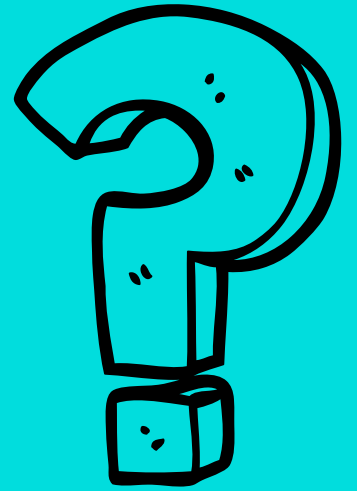
A shore crab

A shark

an Albatross

What is sonar?

- A) A technology to find fish in the water
- B) Another word for summer
- C) The sun
- D) A polar bear with sunglasses



Krill are known for being near the surface at night and move into deeper water during the day - Why do they do it?

a) To not get eaten by predators

b) Because they really like swimming



The Elephant Seal weighs as much as:

2 full shopping bags

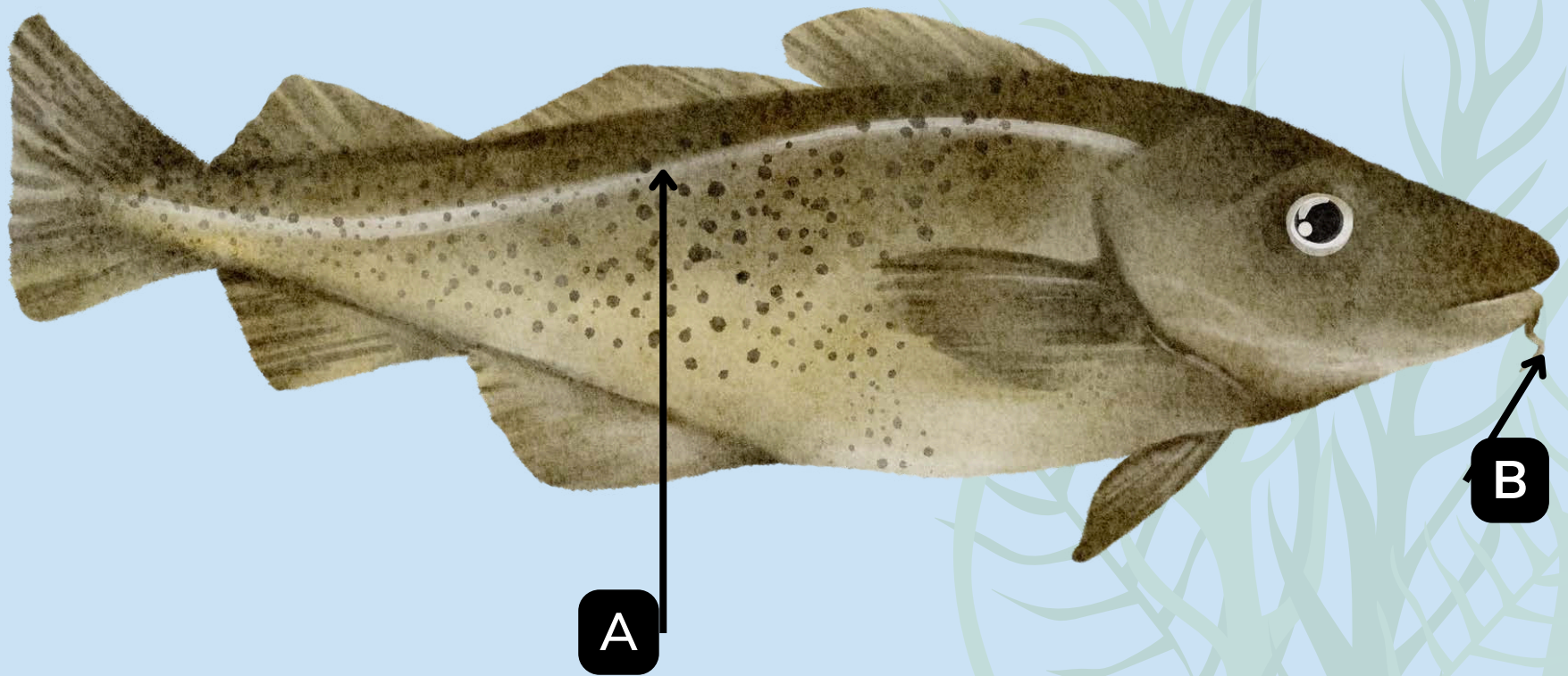
as 3 Arctic Terns

the amount of food a
blue whales eats in a day

all the sand in Ireland



Name the body part
A and B:



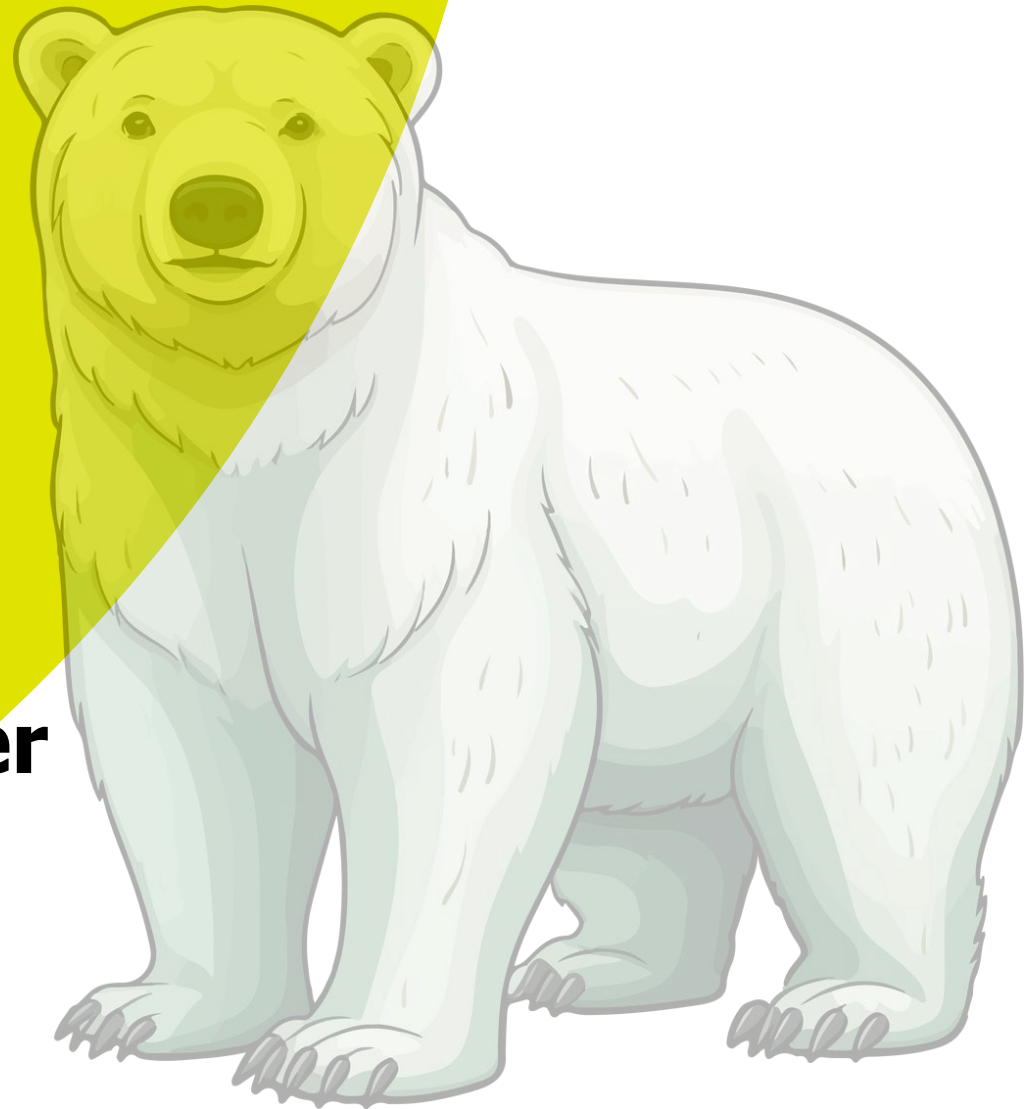
How does the Polar Bear stay warm in the Arctic? Circle the correct statements.

Hollow tubes of hair.

They have small ears.

White skin.

They have a thick layer of fur and fat to store heat.





How did you do?

*We hope you enjoyed this years
Ocean Wonders. Tune in next year
for more Ocean Facts and Fun.*