

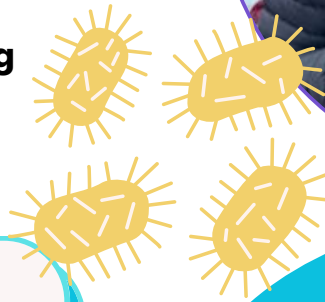
CAREER PROFILES:

ISABELLE JONES PHD RESEARCHER



AN OVERVIEW OF YOUR JOB:

Researching the microbes living in the guts of Brent geese.



WHERE ARE YOU USUALLY BASED?

I am based in the office, the lab and in the field. It depends on the week!

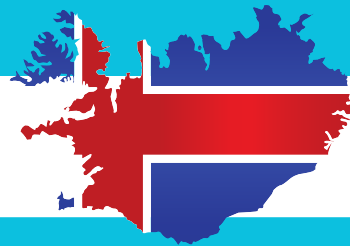
HOW DID YOU GET INTO THIS CAREER?

I did a bachelors degree and then a masters and I wanted to carry on research.



WHAT'S YOUR FAVOURITE PART OF YOUR JOB?

Getting to see the Brent geese in Iceland!



WHAT'S THE MOST CHALLENGING PART OF YOUR JOB?

Working through all of the data once we have collected it.



A TYPICAL DAY...

On a typical day I will check my emails, read some recent papers and make notes, start work on some statistical analysis.

BESIDES FORMAL QUALIFICATIONS, WHAT SKILLS OR TRAITS ARE MOST USEFUL FOR YOUR TYPE OF WORK?

Being a multitasker, being able to stay motivated when things don't always go to plan.

WHAT ADVICE WOULD YOU GIVE TO A YOUNG PERSON INTERESTED IN THIS CAREER PATH?

Being an academic can be a great career if you have an adventurous side and there is so much variety of what you can study so there nearly always something for everyone.



HOW LONG HAVE YOU BEEN IN THIS LINE OF WORK?

2.5 years

WHAT WORK EXPERIENCE, QUALIFICATIONS OR TRAINING WOULD YOU RECOMMEND FOR GETTING INTO THIS CAREER?

A degree in a biological subject is a great start!

