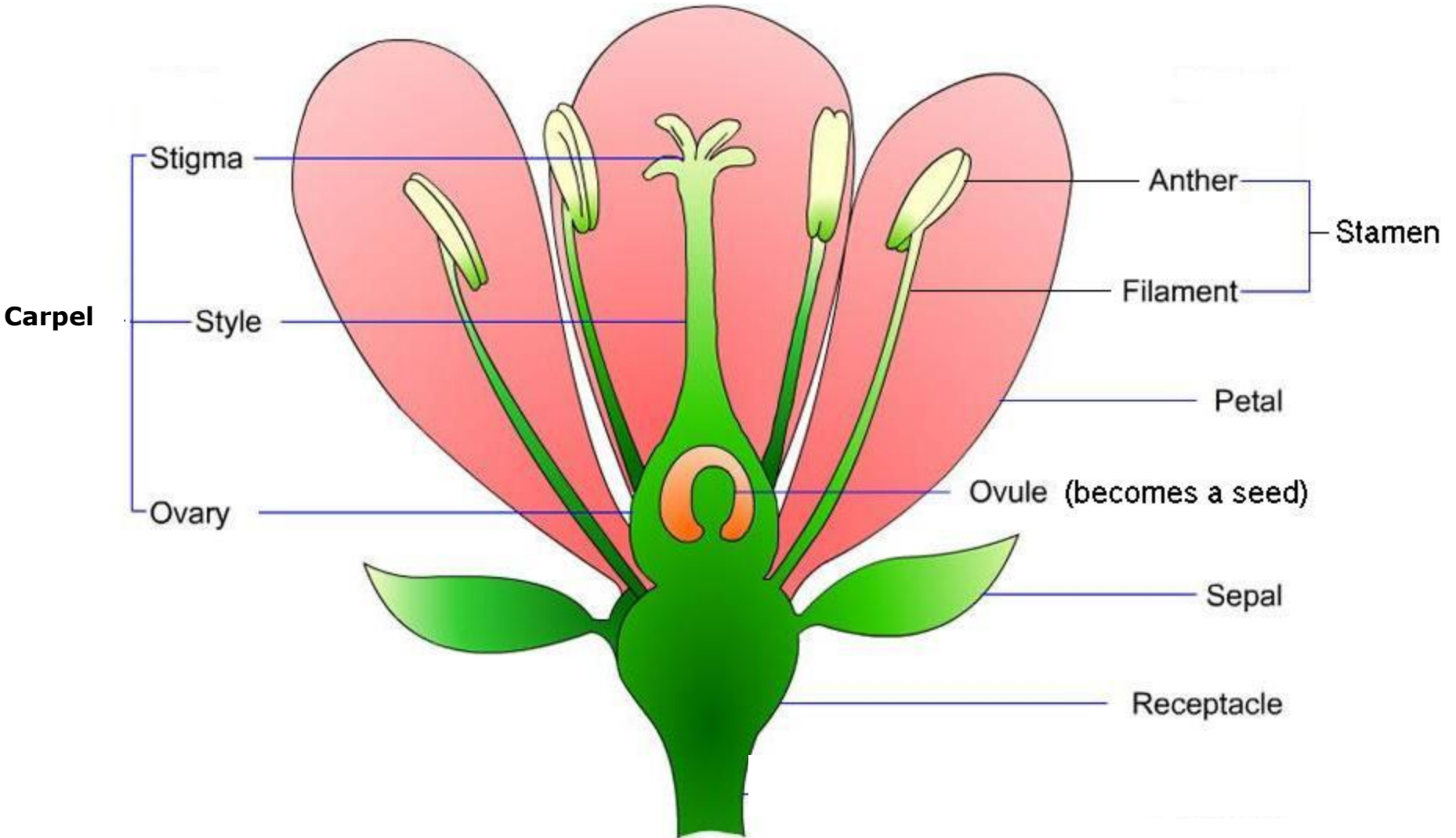


Pollination & Pollinators



Flower parts



Pollination

- Pollination is the transfer of the **pollen grain** from the **male part** of the flower to the **female part** of the flower.



Non-Animal Pollination Methods

- Wind
- Water

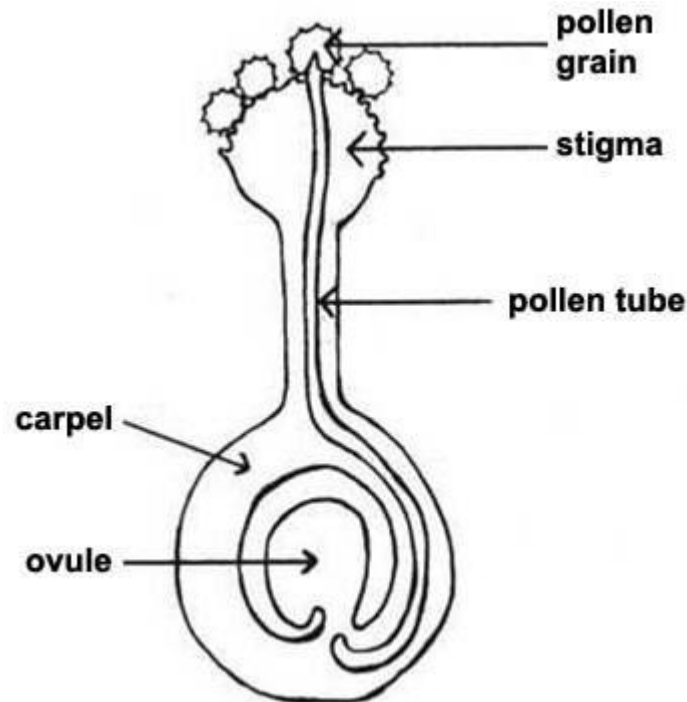


Animal Pollination - Pollinators

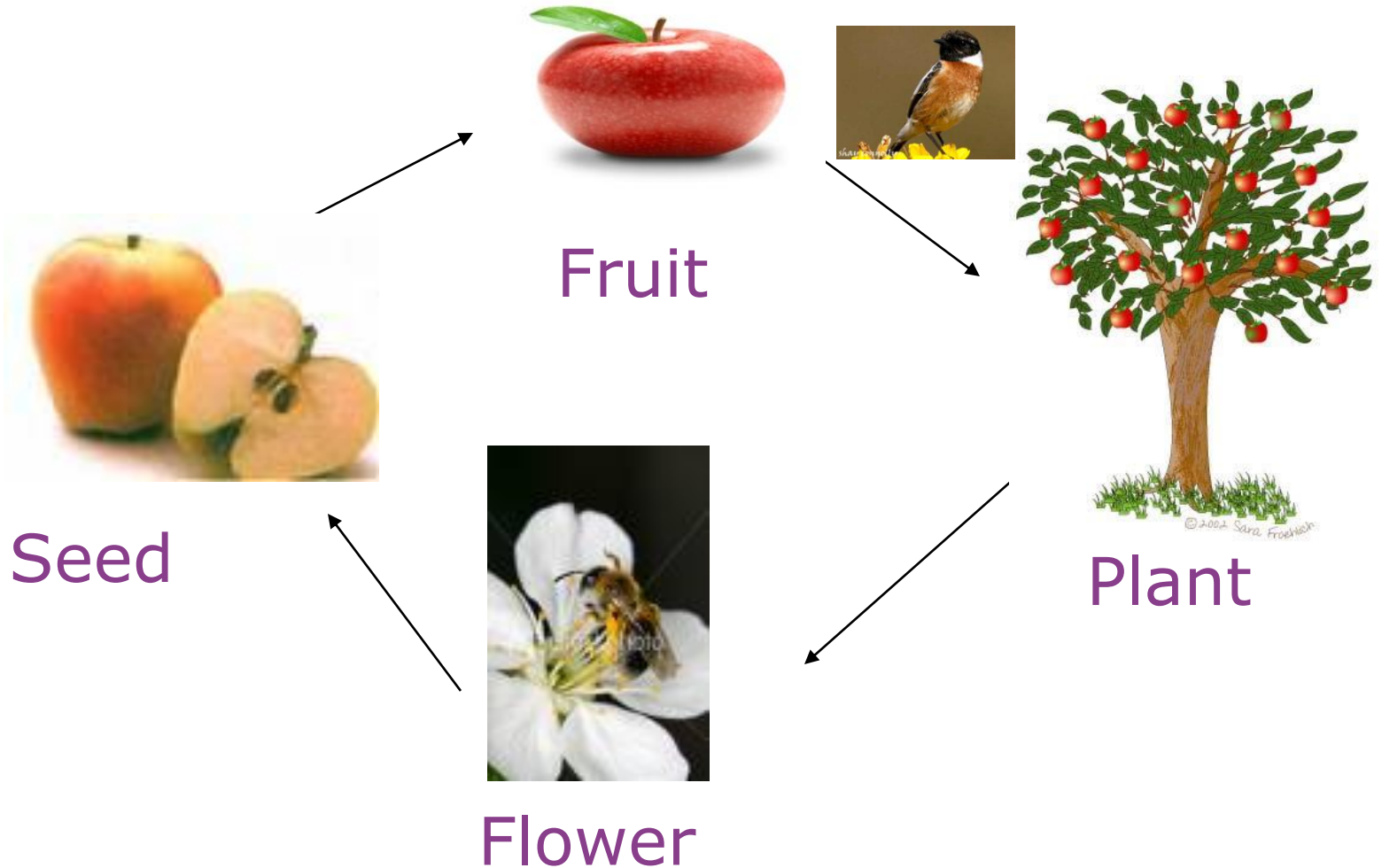


Fertilisation

- The pollen grain fuses with the ovule in the female part of the flower to form a seed



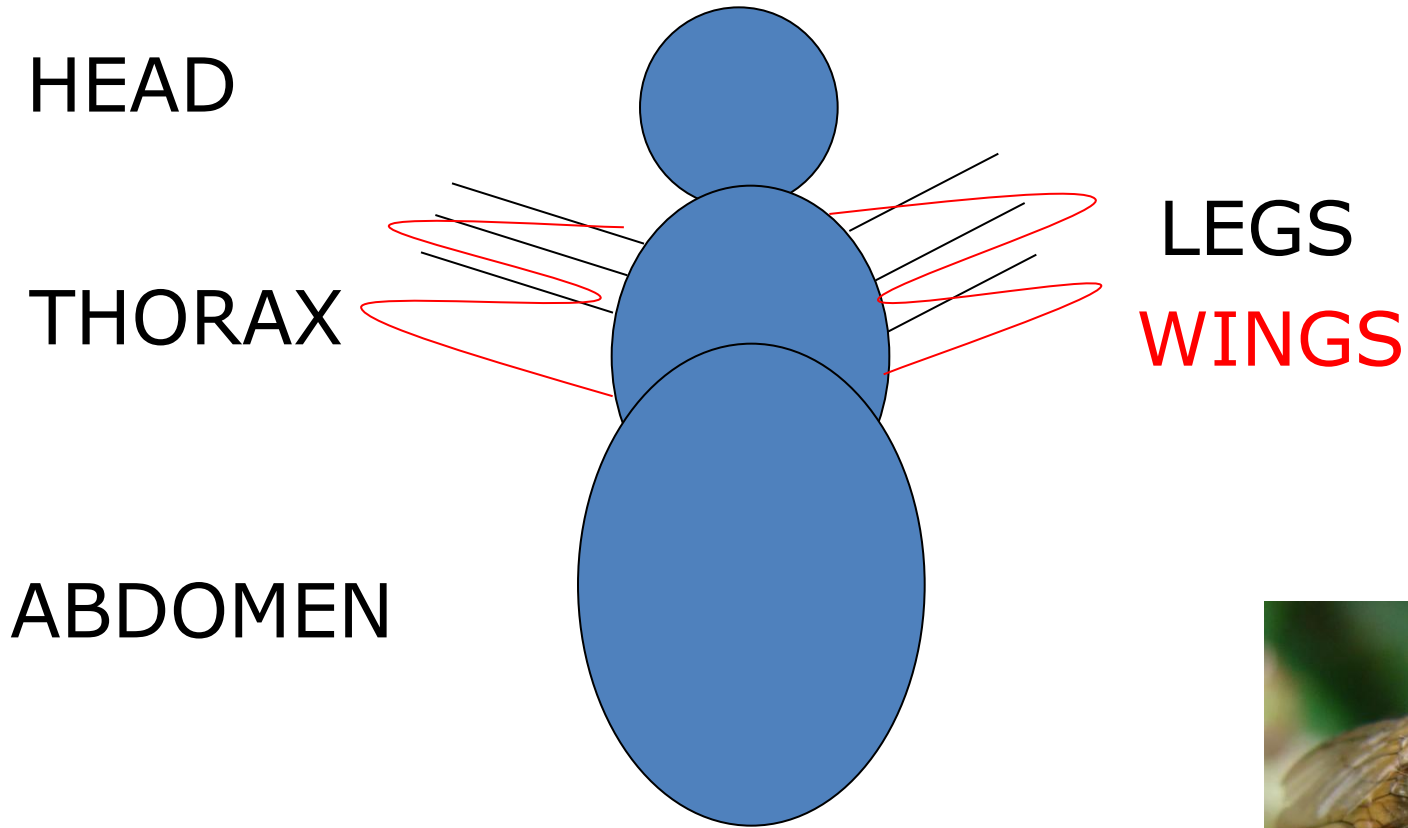
Flower Life Cycle



Ireland's Pollinators



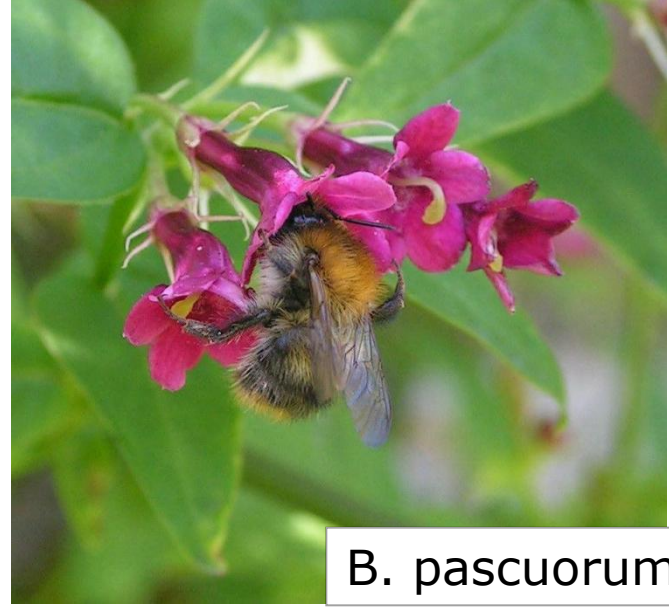
Bumblebee body parts



Common Bumblebees



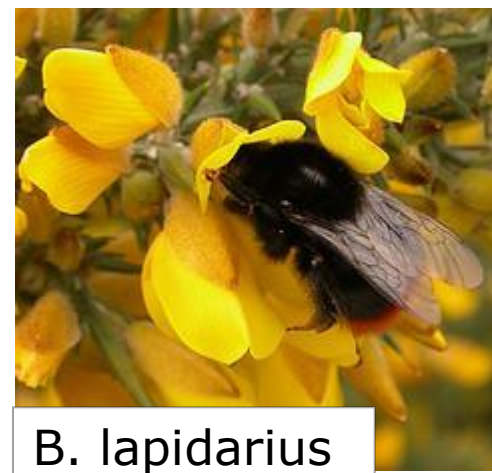
B. terrestris



B. pascuorum



B. hortorum



B. lapidarius

Bumblebees' Requirements



How Humans affect bumblebees

Negative Effects

- Roads
- Buildings
- Agricultural intensification
- Houses without gardens

Positive Effects

- Hedgerows
- Haymaking
- Flower-rich gardens

What can you do??

- Plant native flowers this Spring
- Plant ivy and nettles this Spring as a food source for caterpillars
- Leave some long grass for bumblebees to nest
- Record butterflies and bumblebees you see in May-August by catching with a butterfly net and observation
- Do not spray pesticides
- Do not put fertiliser on grass which deters flowers from growing



Line Transect Walk



Line Transect Walk



Flower Quadrats



Results

- More flowers -> More pollinators



- More semi-natural land -> More pollinators



Pollinators' flowers

