

The Empathy Melody: Grooving to the Beat of Family Dynamics

Global Citizenship – Lesson Plan



Introduction

We've divided it into two parts, each designed to captivate and inspire students while fostering a sense of empathy and understanding of diverse family dynamics.

In the first part, we have a delightful music video that will truly get students thinking about empathy and the vast array of family dynamics. The accompanying song is incredibly catchy, so feel free to watch it multiple times if it resonates with you!

Moving on to the second part, we encourage students to reflect on their own family dynamics. Through a drawing activity, they will have the opportunity to identify those who care for them and explore ways in which they can reciprocate that care. This activity focuses on empathy, an essential quality for global citizens, and also touches on two United Nations' Sustainable Development Goals (SDGs): SDG 3 - Good Health & Well Being and SDG 10 - Reduced Inequalities.

Curriculum Links

Social, personal and health education

Learning Objective

Engage students in exploring empathy, understanding diverse family dynamics, and fostering their ability to care for others, while connecting these concepts to SDG 3 and 10

Materials

Activity sheets, colouring utensils

Learning Methodology

Art, discussions, idea-storming

Target Age

1st-4th Class

Time

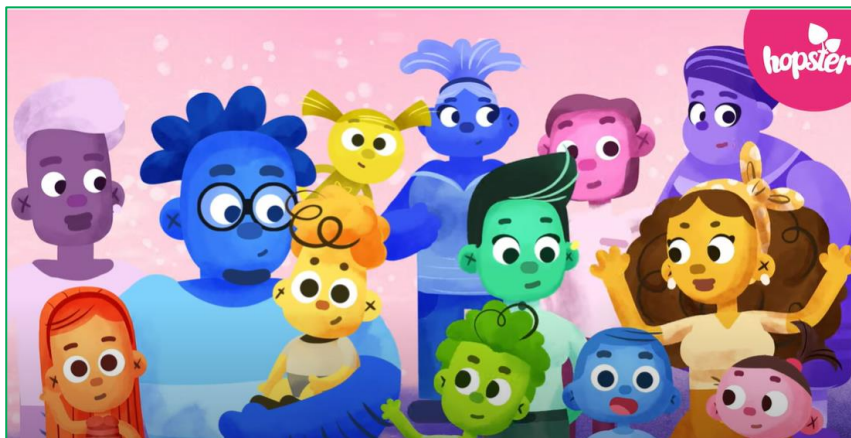
1 hour

Preparation

Print The Empathy Melody activity sheets

Part 1: Learning about New Year Resolutions

i) Watch [Love is Love | Hopster Music Video](#)



Now that you've grooved out to the music video it's your turn to think about caring and get creative!

The Empathy Melody: Grooving to the Beat of Family Dynamics

Global Citizenship – Lesson Plan



Part 2: Getting Creative

- i. If the students are of an appropriate age, encourage them to engage in a thoughtful discussion regarding the various types of families depicted in the video. For those who feel comfortable, provide an opportunity for them to share which family dynamic resonates with their own personal experience.
*If students are too young for this part skip to the next step
- ii. Distribute The Empathy Melody Activity Sheet, ensuring clear instructions are provided either through oral communication or written guidance as needed to assist students in completing the activity sheet accurately.
- iii. Upon completion, facilitate a collaborative sharing session where students can showcase their artwork either within small groups or to the entire class. Additionally, an optional discussion can be initiated to explore how we can extend care and empathy to others in various contexts if desired.
- iv. Lastly, proudly display the artwork on your school's notice board, ensuring that their exceptional work is exhibited for the wider school community to appreciate and be inspired by.

The Empathy Melody: Grooving to the Beat of Family Dynamics

Activity Sheet



In the video we watched, we saw lots of different families, and you might have even spotted one that looked just like your own. How cool is that? Now, get your creative juices flowing because we're going to show how much we care!

Draw the people who care for you on the left side of the space and someone you can show more care for on the right side, using vibrant colours inspired by the video we watched. Let's showcase our creativity and caring nature as we celebrate the uniqueness of families!

People who care for me. . .

**Someone I could show more
care for. . .**