

ARE SCHOOL STREETS DIFFERENT TO SCHOOL ZONES?

Yes, a School Street is different to a School Zone. Both developments aim to create safer access at the front of schools, however the design and operation of both spaces are very different. A School Zone refers to the built infrastructural upgrades which are developed at the front of school. These new installments and features are designed to reduce traffic at school gates and to improve safe access for children. What differentiates a School Street from a School Zone, is that vehicular traffic is restricted across the complete width of the road in the case of a School Street.

HOW DOES IT WORK?

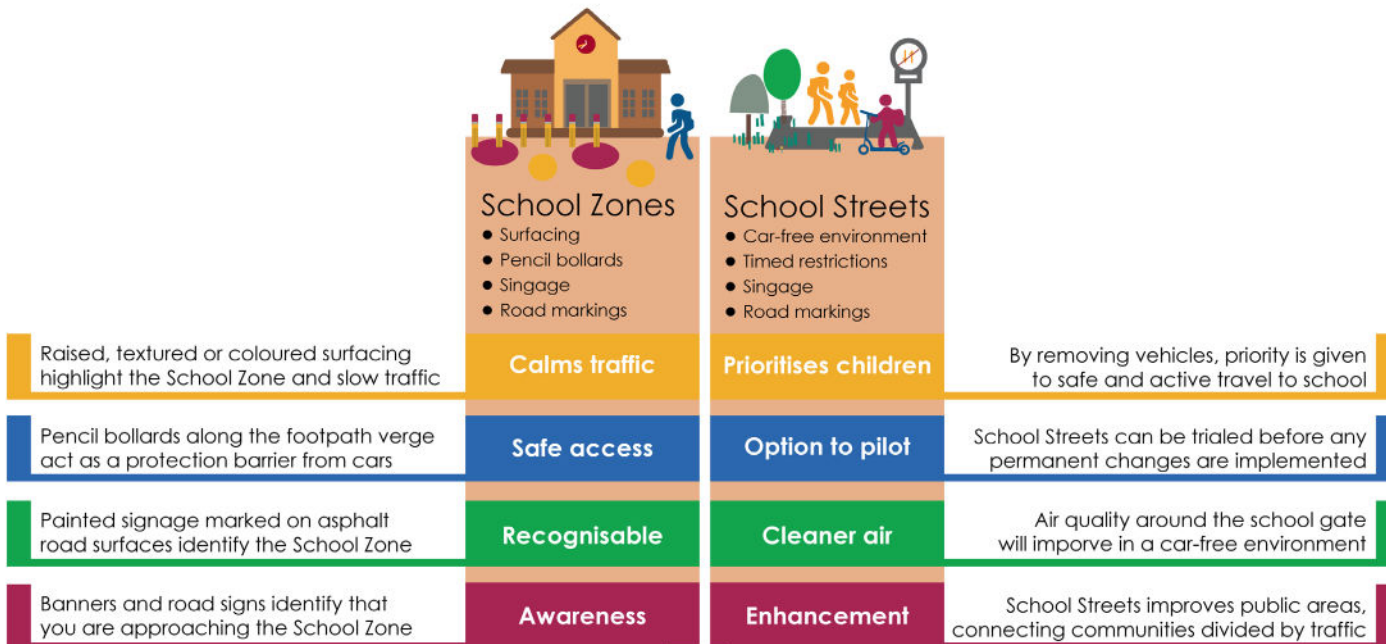
A School Street will operate initially as a trial before it is permanently implemented. A School Street will be either fully pedestrianised or restrict vehicular access during term-time at fixed drop-off and pick-up times. The timings of restrictions should be determined by the school and those who need access to the street. For example a school with a 9.00am start and a 14.30pm finish would restrict access to the street between 08:30 to 09:15am and between 13:00 to 14:45pm.



WHAT IS A SCHOOL STREET?

A School Street operates as a street where vehicular traffic is restricted across the complete width of the road during specific timed closures. Redirecting vehicles away from the front of schools by means of specific timed closures provides the safest possible environment for students to access school. This brochure aims to answer questions which parents or guardians may have about a School Street at their school.

- What is the aim of a School Street?
- Who benefits from a School Street?
- How does a School Street operate?





SRTS

SRTS

SAFE ROUTES TO SCHOOL

The SRTS Programme launched in March 2021 and was open to all schools in Ireland to apply for front of school upgrades which provide walking, cycling and safer access to school. The programme is an initiative of the Department of Transport and supported by the Department of Education. It is operated by the Green-Schools Programme in partnership with the NTA and local authorities. A dedicated SRTS Infrastructure Officer works with schools and local authorities during the process.

SCHOOL STREET AIM

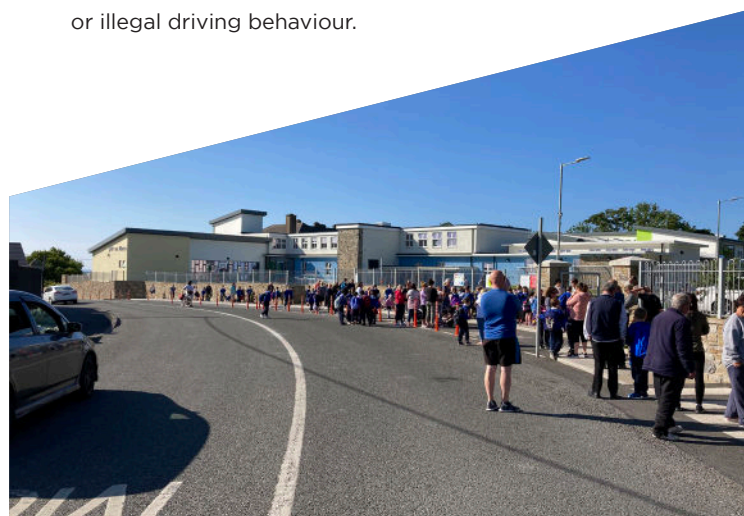
Traffic-free School Streets have multiple and far-reaching benefits for all members of the community and the environment, but especially for young users. School Streets aim to prioritise children as they access school by creating a safer and calmer front of school. Closing the street to traffic by means of specific timed closures, will provide the safest possible environment for children and families to safely walk, wheel, cycle and scoot to school.

WHO BENEFITS?

Active travel to school in a car-free environment provides multiple direct benefits including increased personal safety, fitness, alertness, social well-being, and fosters independence in children. School Streets improves air quality around the school and benefits the public realm by connecting communities who may be divided by traffic. When restrictions against vehicular traffic are in place it is also easier to reprimand dangerous driving offenders or illegal driving behaviour.

SUPPORT SCHOOL STREETS

A School Street may restrict access by means of a fixed or removable barrier. It is very important for parents to obey both regulatory and temporary traffic signs and to never distract the School Traffic Warden or volunteer who is operating the School Street. Learn more on how to support your school from our brochure '[How to Support your School Street](#)'.



Artists Impression

S: @SRTS_Ire

W: www.greenschoolsireland.org/saferoutestoschool/

E: srts@eeu.antisce.org

T: +353 1 400 2222

A: EEU An Taisce Unit 5a

Swift's Alley, Francis Street

Dublin, D08TN88

Ireland