

Investigate & Create

Teacher Guidelines



Overview

Investigate & Create is a whole class initiative to produce a short video or poster documenting students' experiences of walking to school on **Wednesday 21st September** (National WOW Day) or any day during National Walk to School Week.

Objectives

- Raise awareness about the multiple benefits of walking and being active
- Actively engage students in sharing their experience

Learning Outcomes

- Enable students to actively investigate and explore the walking experience at their school, using survey forms and noting their findings
- Develop communication skills to feedback their findings to the wider class and work together to report the walk to school experience; design the format; plan the content and produce the output whether that is a video or poster collage

Curricular links

- English – Oral Language (Exploring & Using, Understanding and Communicating)
- English – Writing (Exploring & Using, Communicating)
- SPHE – Myself and the Wider World

Resources

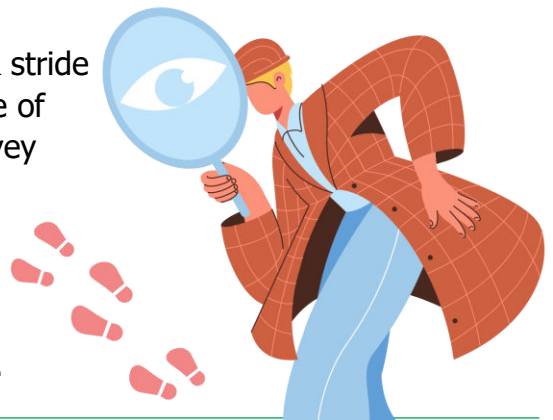
- [Lesson Plan outline](#) (Powerpoint) for sharing with large groups
- Investigate Worksheets ([Junior](#), [Senior](#)), Create worksheet ([general worksheet](#))
- Template letters are available from www.greenschoolsireland.org

Activity

Step 1: Investigate

- Children who can walk to school or park & stride on your chosen morning are given the role of investigators and use the 'investigate' survey sheet to record their findings

This activity is about capturing what children love about walking to school, all the positive things about their experience.



Investigate & Create – Teacher Guidelines

Step 2: Discuss and Create

- Hold a whole class discussion about the walk to school experience
- Together as a class decide how to present your findings
- Allocate roles and responsibilities producing the video/poster

Creative ideas

It is up to you how you wish to present your findings. Here are some ideas to help you get started:

- Create a 'Today's News' style video report
- Photo montage of students walking to school with student voiceovers
- Draw maps of routes to school and add pictures/drawings
- Word/Drawings/Photo montage collage of findings



Tell us about it

We would love to hear from your class and celebrate your work!

Schools are invited to submit two entries by emailing your creations to travel@eeu.antaisce.org before October 7th, 2022. If you'd also like to share your work on social media, you can tag us with [#WalkToSchool22](#) [#W2SWCreate](#) [@greenschoolsIre](#) [@TFIupdates](#)

The best entries will be showcased on our media platforms.

Further resources

Further resources are available from our website www.greenschoolsireland.org
Don't forget to contact your local travel officer for guidance and support.