



HOW TO READ A WATER METER

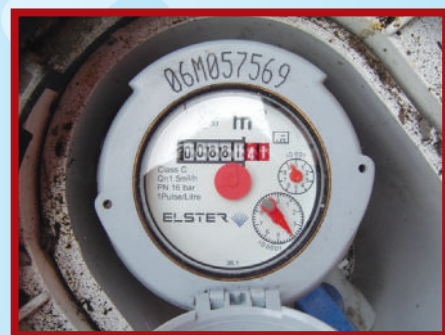
If you want to know how much water you are using in your school, you need to read the meter if there is one.

The water meter is usually located outside the school building in the grounds or on the footpath. It is usually covered with a lid marked 'Water' or 'Uisce'. You can use a screwdriver to open the lid. Underneath the lid there will be a frost proof layer which can be removed to read the meter.

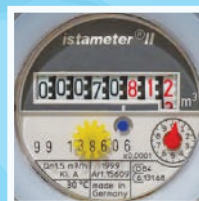
When the water comes into the school it has to flow through the water meter which is fitted in the water pipe. Little numbered dials on the top turn slowly round giving a reading.

If you look carefully at the first picture you will see that the final two numbers are written differently to the first ones- they are usually in red.

The first numbers, the black digits are the big ones! They tell you how many cubic meters have been used- 1 cubic meter = 1000 litres. The digits in red tell you how many hundreds and tens of litres have been used. The little dials with the red hands record litres and centilitres. In the photo below, the meter reading is: 881,414 litres. That's a lot of water, but don't forget that is how much water has gone through the meter since it was fitted, not since it was last read.



This meter has 3 red numbers at the end- they show hundreds, tens and units of litres. The dial shows centilitres, so the meter reading here is a 70,812 litres and a few millilitres.



There are several different types of water meter used in schools, but they should all show water use in cubic metres (M³) There are 1,000 (one thousand) litres in a cubic metre.