



Green-Schools

**CYCLE
BUS**



Guide

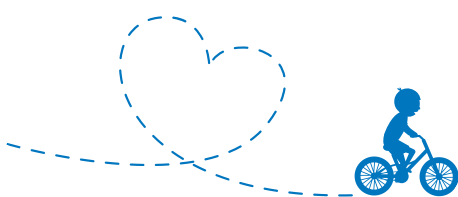
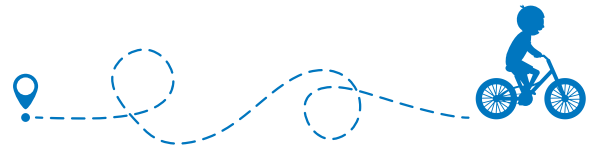




What is a Cycle Bus?

A Cycle Bus is a fun way to travel to school with students cycling along a designated route with parents accompanying them. It is a parent/guardian/community-led initiative whereby several parents and volunteers lead groups of cycling students to one or more schools. Cycle Buses have a specific route and schedule with stops along the way where students can join. Cycle buses have been operating successfully for students all around the country since 2019.

Everyone has a right to cycle to school and a Cycle Bus can ensure a safer journey with everyone cycling together in a convoy.



Benefits of a Cycle Bus

Cycle Buses help to normalise cycling as a mode of transport to school. They are a fun and social way for students to improve their cycling skills, develop road-safety awareness and build confidence, as well as reducing vehicular traffic on the journey to school.

Organising a Cycle Bus can be an effective way of encouraging large groups of students to cycle to school, which in turn alleviates congestion at the front of school. Studies have shown that students who get fresh air and exercise on their journey to school are more alert and have better concentration levels.





Where do we start?

WHO IS INTERESTED?

Find out who is interested in a Cycle Bus. Ask at school and in your local neighbourhood. Undertake a survey at the school gate.



MEET & DISCUSS

Link in with other parents/ guardians/ community members. Hold a meeting(s) to discuss the proposed Cycle Bus, schools involved, possible school support, administration required, training, etc.



CHOOSE A ROUTE

Decide on a route, stops and timings. Complete a route audit to make sure its safe and realistic for a group cycling.



VOLUNTEERS

Recruit volunteers to marshal the group. Go on trial cycles together to practice marshalling.



CYCLE

Choose a launch date and schedule (everyday, once a week, etc) and start cycling to school!



Tips for getting started:

- The Cycle Bus will need dedicated, reliable support and good planning. We suggest nominating a person(s) to take the lead in coordinating the route and schedule.
 - WhatsApp groups are commonly used when coordinating Cycle Buses.
- We recommend doing a route audit/cyclability audit before you get started and submit your findings to the Local Authority.
- Check if the local schools will assist by contacting Green-Schools coordinators.



Who can help us?

Local Schools, Local Gardaí, Cycle Bus groups around the country, Local Authorities, cyclist.ie, CYCLE RIGHT, and Cycling Ireland.

CYCLE RIGHT also have an online training course suitable for adults and second level students – details on their website:

<https://elearning.cycleright.ie/>



How can Green-Schools help?

Does your child's school have cycle parking?

Have your children had cycle training?

Green-Schools can assist with funding for cycle parking and CYCLE RIGHT training for schools. We also offer a 'Get In Gear' cycle training course for parents and teachers.

Green-Schools Travel officers are based in every county in Ireland and can also give advice and assistance. You can find contact information on the Green-Schools website –

<https://greenschoolsireland.org/about/our-people/>





Cycle Bus Community

Cycle Buses from around the country are represented in a national Cycle Bus Network. This Network provides a platform for sharing successes and tips, help in troubleshooting common issues, provides greater national visibility, and provides support and resources.

Help us to build a nationwide Cycle Bus Network by registering your Cycle Bus with Green-Schools to ensure that everyone can link in for advice, support and solidarity. Email cyclebus@eeu.antaisce.org for more information.

