

# Things to look out for....

## Dandelions



Dandelion flowers are found growing in grass and cracks in pavements in spring. They are important food for bees and other insects which pollinate them while eating. This means they move little bits of pollen from one flower to the next and this allows the flower to make seeds.

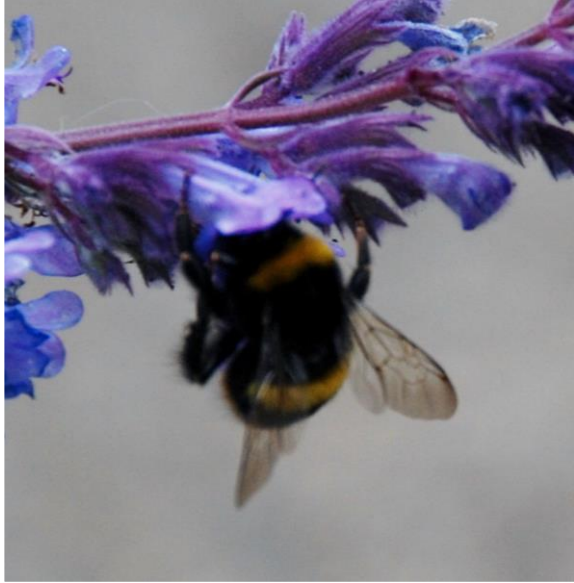


Once the flower makes seeds they look like this! There could be over 100 seeds here! Each one is attached to a fluffy parachute which blows off in the wind. If it lands on the grass or soil or new flower can grow!

Why not collect some seeds and grow them in a pot?

# Bees, wasps and hoverflies

These are easy to get mixed up as they look alike. Here are some tips to figure out which is which!



Bees are hairy! They can be skinny or round and have different coloured strips on their bum! They feed on flowers like dandelions and are important for pollination!



Wasps have a narrow body with yellow and black strips and a straight stinger! They also pollinate flowers but don't have hair which means less pollen sticks to them!



Hoverflies have no sting but they look like bees or wasps to make animals scared of them and stay away! This is called mimicry. When they fly it looks like they are hovering mid air.

[Why not try this online course to learn how to tell different types of bumblebees apart?!](#)

# Ash Tree



Ash trees are one of the last trees to grow their leaves back after the winter. They actually often grow purple flowers before any leaves reappear. Most other trees are the opposite!

# Swallows



Swallows are birds which migrate to Ireland in summertime from southern Africa. They have started to arrive in Ireland already this year. Their forked tail is a good way to spot them. They fly low to the ground catching flying insects.

Why not draw a picture of what you think the leaf or flower will look like on a tree without any yet and then wait and see how close you were?